



Welcome

Preparing for your visit

Travelling to the Museum

The nearest tube station to the Jewish Museum is Camden Town on the Northern line. Camden is a popular place and the station is often busy so if you choose to come from the station you will probably see lots of other people around.



On your walk to the museum, you may see the famous Jazz Café and also the red bus which is the home of an estate agents.



Arriving at the Museum

The Jewish Museum can be found on Albert Street. From the outside, it looks just like one of the other houses on the street.



We are here!

The museum opens at 10am. You might have to wait in a short queue outside. Before you go in, one of our Security staff will check your bag. After they have done this, they will open the door for you to let you inside. The door opens outwards. If it is raining, your bag will be checked inside.



Inside the Building: Admissions Desk

Once inside the museum, you will be directed to our Admissions Desk. Here a staff member will welcome you to the Museum. You can buy a ticket or show a ticket you have bought online.

There is a cloakroom where you can leave your bags and coats. Nearby there is an accessible toilet and baby care room.



Ground Floor: Welcome Gallery

Just inside the museum is the Welcome Gallery. This space has our Pitch Up Exhibition, looking at different Jewish organisations around the country.

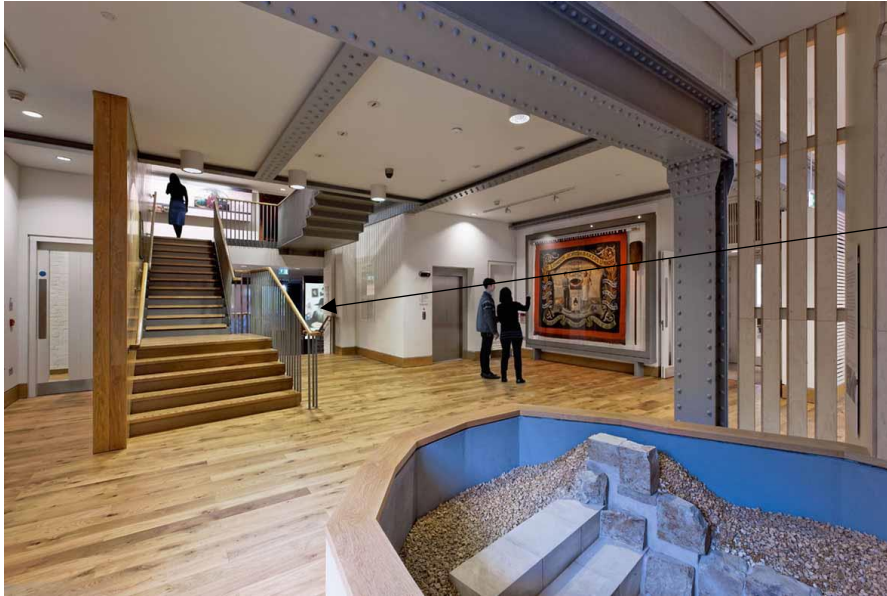
There are tables and chairs where you can eat your own food and drink, or anything you have bought from our small café. This café sells hot drinks and snacks.



Here you will also find our shop. This sells books, toys, Judaica and souvenirs of the Museum.

Upper Ground Floor

On this floor you will also find the toilets and access to the stairs and lift.



Welcome Gallery



Upper Ground Floor- Community Learning Kitchen

Our Community Learning Kitchen is opposite the lift and stairs. There may be a baking workshop happening during your visit. If there is might hear the sounds of people chatting and baking in this space. You may also smell the food that is baking when you are near the kitchen. You can call in advance to find out if this space will be in use.



First Floor: Judaism Gallery

You can go up the stairs or use the lift to get to the Judaism Gallery. The room is laid out like a synagogue (the Jewish place of worship) and right in the centre you can see the Torah (the Jewish holy book).

It is darker in this room than in other places in the museum because the objects on display are very precious and extreme light can damage them.



Second Floor: History Gallery

If you go up to the second floor you can see the History Gallery, where you can learn more about British Jewish history from 1066 to today. This gallery is laid out in a circle so you will start and finish in the same place.

There is a Yiddish Theatre video that starts playing if someone presses the button. It has costumes you can try one.



Second Floor: Holocaust Gallery

Our Holocaust Gallery is next to our History Gallery. You can choose whether to go into this space or not. It is aimed at people who are 12 or over. There is video playing in this gallery of Holocaust survivor Leon Greenman sharing his testimony. This can also be heard at the end of the History Gallery.



Second Floor: Living Communities Gallery

The Living Communities Gallery is next to the Holocaust Gallery. It has an exhibition of portraits of the LGBTQ+ Jewish community. There is a stained glass window at the end of the gallery. When it is light outside, the light will shine through this window.



Third Floor: Research Library

Our Research Library on the Third Floor has many books about Jewish History. You can read these in our Research Library. You may also see our volunteers looking at objects from the collection.



From the third floor there is a big drop so please be careful on the stairs. Do not lean over or climb on the bannisters.



The Jewish Museum London look forward to meeting you. We hope this guide will help you prepare for the visit. If you have any questions or requests please email learning@jewishmuseum.org.uk