



Secondary School Visual Story

Watch our video Welcome to Jewish Museum London

<https://www.youtube.com/watch?v=Rg9s8E9nRO8>

Arriving at the Jewish Museum

The Jewish Museum is located on Albert Street in Camden Town. It looks like one of the other houses. The words 'Jewish Museum' are written over the door.

The Museum opens at 10 am. If your school arrives before then you might have to wait outside for a short time.



Security

We have Security Guards outside and inside of the museum who will welcome you and open the doors to let you in. At the Security desk your teachers will sign you in.

Once you are inside the building you may be asked to line up and wait in the entrance while your teacher signs you in. There might be other members of the public coming in and going out so it can get busy.



Learning Team

Your workshop will be run by our Learning Team. While you are waiting, one of the members of the Learning Team will meet you and take you to one of our teaching spaces. You will be able to recognise the Learning staff by their blue lanyards. There might also be some volunteers or interns in your session wearing a green lanyard. They will be happy to help you throughout your session.

Volunteer/ Intern



Learning Team
Member



Access Trolley

In the back of our teaching spaces you can find one of our Access Trolleys, which are filled with many objects and resources you can use in your workshop.

Take one of the bags with you to take resources around the museum.



Teaching spaces: Auditorium

You will spend most time of your visit in one of our three teaching spaces. Our biggest space is the Auditorium. This is a large room with a stage at the front, a blue carpet and a projector. You can sit on a chair facing the stage while our Learning Team introduce you to the museum. There might also be tables set up with object handling or craft activities ready for your workshop.

You might also have lunch in this space. There will be bins in the learning spaces to put your rubbish in. The nearest toilets are located just to the right when you exit the room (women) and under the stairs (men).



Teaching spaces: Education Space



Another teaching space you might spend time in is our Education Space. The Education Space is a room with lots of objects from our handling collection that you might touch. There are large windows in this space so it is a lot lighter than the galleries. There is a wooden floor and a projector.

There are lots of interesting objects from our handling collection in the Education Space that you might be able to touch, but if you are having your lunch there make sure that you wash your hands beforehand. The nearest toilet to the Education Space is just outside of the right door.

In the Education Space you might hear sounds of people opening and closing doors in front of the door or people outside on the street.

Teaching Spaces: Living Communities Gallery

Some activities of your workshop might also take place in the Living Communities Gallery on the Second Floor, right next to the History Gallery. This space tells the stories of different members of the Jewish Community like, LGBT+ members. This is the smallest teaching space. Because there are objects on display you will not be able to eat or drink anything in here.

This space has a glass sound proof glass door.

In the living communities there are many stools and tables you might be doing some activities on.

The nearest toilets are on your left as you leave this space.



Ground Floor: Welcome Gallery



When you move between activities you might go through the Welcome Gallery. We regularly change the exhibition here so it might look different to the photo. If you want to know what exhibition you can see now you can check on the 'What's On' page on our website.

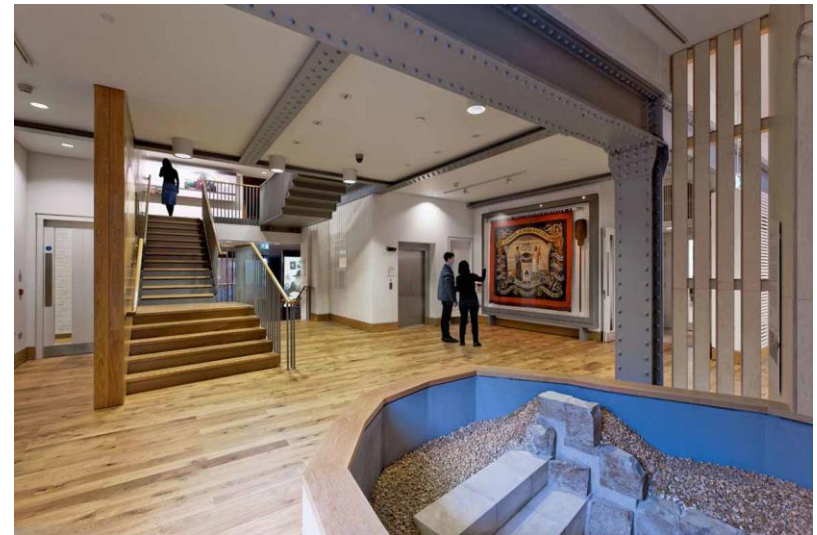
Next to the Welcome Gallery is our shop. Your teacher will decide if you will visit the shop as part of your trip.

Upper Ground Floor

The Café is located on the Upper Ground Floor of the building. It might get noisy and busy in here between 11am and 2pm.

Outside the café are the stairs, the lift and women's toilet. The men's toilet is located opposite the "Mikveh", a Jewish Ritual Bath that you will see on the Upper Ground Floor.

Some of the objects you might have to find for your workshop are the Bakers Banner, which is located right next to the entrance to the auditorium or the Mikveh, which you can find right next to the entrance to the Café. These are also objects that are great to explore while you are waiting to go into the auditorium.



First Floor: Judaism Gallery

If you are coming to learn about Judaism during your workshop you will come up to the Judaism Gallery. This room is laid out a bit like a synagogue, which is the Jewish place of worship. You might be asked to all gather around the big Torah in the centre of the room for a short introduction to the space.

This room is a bit darker than the other rooms in the museum as the objects on display are very precious and might get damaged by extreme light.

We also have a Shabbat section, where you can sit at the Shabbat table and listen to some Hebrew Shabbat songs and blessings said by a Jewish family. The light behind the window of this section changes to pretend it is day and night.



Second Floor: History Gallery

On the Second Floor is the History Gallery. You can learn more about British Jewish History here from 1066 to today. It is laid out like a circle so you will start and finish in the same place. Don't back away from pulling out the drawers, some of the objects on your worksheet might be hidden here.

There are also a lot of interactive objects and spaces that you might find here, like the Yiddish theatre display. You might hear some sounds coming from these and the exhibition on the 3rd floor.



Start

Finish

Second Floor: Holocaust Gallery

On this floor you can see the Holocaust Gallery. If you are doing the workshops 'Never Again Auschwitz' or 'Faith After The Holocaust' you will do part of your session here. Here you can learn about Leon Greenman, a survivor of the Holocaust who continued to tell his story for the rest of his life. There are some sounds coming from videos that you might hear.



Stairs



When you are on the stairs you will see that there is quite a big drop so be careful not to lean over the bannisters. The stairs leading up to the third floor lead to a temporary exhibition.