



Primary School Visual Story

Watch our video Welcome to Jewish Museum London

<https://www.youtube.com/watch?v=tSCvSKGAeZg>

Arriving at the Jewish Museum

You can find the Jewish Museum on Albert Street in Camden Town. It looks like the other houses on this street but with a big sign saying “The Jewish Museum” over the door.

The Museum opens at 10 am so if you arrive before then you might have to wait for a little while.



Security



In front of the building you will meet one of our very friendly security guards. They will open the door for you. Once you are inside your teachers will sign your school in at the security desk.

There may be lots of other visitors coming in and going out of the building. That is why you may be asked to line up when you enter the building.

The Learning Team

Your session will be led by members of the learning team. They will be around to help you and there will be time to ask them questions. They will be happy to answer them and help you with any problem you might have. You will be able to recognise the members of the learning team by their blue lanyards. There might also be some volunteers or interns in the workshop. They will be wearing green lanyards and are also able to help you.

Learning Team
Member



Volunteer/ Intern



Access Trolley

The Learning Officers will take you to one of our teaching spaces. In this space you will find an Access for All Trolley. In this Trolley there are many resources you can use in your workshops. Whenever you feel like these objects might be helpful feel free to borrow them and return them after your session. You can also take resources to the other spaces. Just put it into one of the Borrow Bags in the Access Trolley.



Auditorium

Most of your time in the Jewish Museum will be in one of our teaching spaces. The biggest is the Auditorium. The Auditorium is a large room with a stage at the front, a projector and a blue carpet. When you come inside of the Auditorium you will see a clothing rack at the back of the room. You can put your bags and coats on it. After that you will be asked to sit on the floor facing the stage.

Here you might also have your lunch. You will find two different bins in the Auditorium to throw all your rubbish in. The girl's toilet is just outside the Auditorium on the right and the boy's toilet is under the stairs to the right.



Education Space

Another teaching space you might spend time in is our Education Space. The Education Space is a room with lots of objects from our handling collection that you might touch. There is also a projector and a coatrack to put your bags and coats on. There are large windows in this space so it is a lot lighter than the galleries.

During your session you might have lunch here so there will also be bins in this space. The nearest toilet to the Education Space is just outside of the door on the right of the room.

In the Education Space you might hear sounds of people opening and closing doors in front of the door or people outside on the street.



Door to
gallery

Toilet through
this door

Teaching Spaces: Living Communities Gallery

You might do some parts of your workshop in our Living Communities Gallery. This gallery is on the Second Floor right next to the History Gallery. The Living Communities Gallery tells you about different people from all over the world. This is our smallest teaching space. It has a wooden floor and a door made of soundproof glass. There are stools you can sit on during your session. The nearest toilets are on your left as you leave the Gallery.



Ground Floor: Welcome Gallery

When you move between activities you might pass the Welcome Gallery. The exhibition might look different than it does on the picture as we frequently change what is on display.

Next to the Welcome Gallery is our shop. Your teacher will decide if you will spend time in the shop.

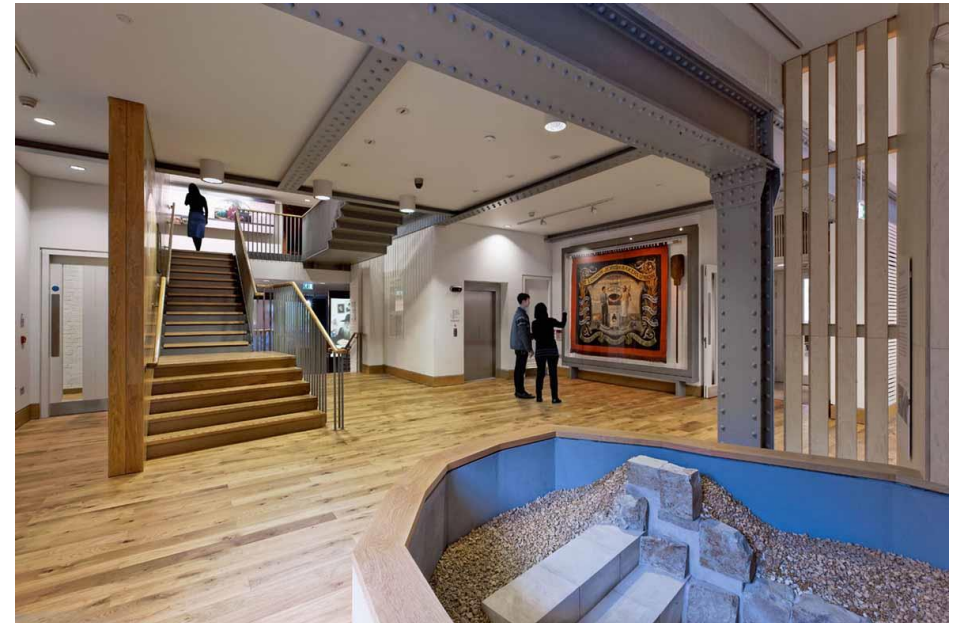
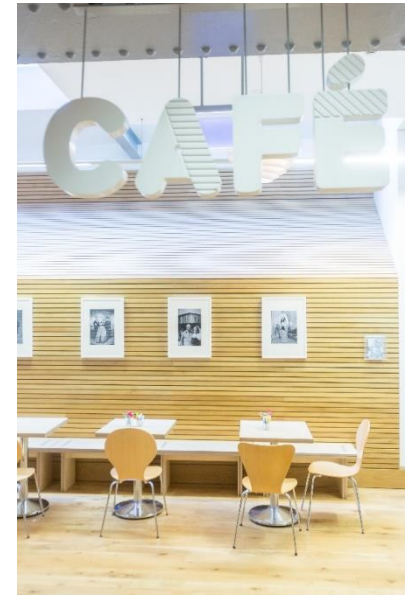


Upper Ground Floor

There is a Café on the Upper Ground Floor of the museum. In the café there is also an activity zone with arts and crafts.

There are toilets, stairs and a lift to reach the other spaces. You may be asked to keep to one side of the stairs when you use them.

If you are waiting to move to another learning space during your workshop you can take a look at one of the oldest objects in the museum, the Medieval Mikveh.



First Floor: Judaism Gallery

If you are learning all about Jewish objects you might take the stairs or the lift to get upstairs to the Judaism Gallery. This Gallery looks similar to a real synagogue; a Jewish Place to pray. There might be an Intern or Volunteer, who will introduce you to the space.

The objects in this room are very important and to keep them safe this room is a bit darker.

There are lots of objects on display behind glass. There are also some things you can touch for example the Shabbat section. Here you can sit at a Shabbat table and the light in this space changes to pretend it's turning between day and night. There are also prayers being sung and read out in Hebrew, the language in the Torah.



Second Floor: History Gallery

On the Second Floor there is the History Gallery. Here you can learn all about the history of Jews in Britain. There are also a lot of things to listen to and to touch in this Gallery. You can pull out some of the drawers to look at the objects inside.

This room is laid out in a circle so you will start and finish in the same place.

You might hear some sounds coming from the gallery on the 3rd floor and background noises coming from videos in the gallery.



Start

Finish

Stairs



When you are on the stairs you will see that there is quite a big drop so be careful not to lean over the bannisters. The central stairs lead up to an exhibition on the 3rd floor that we change from time to time.