



Welcome

Preparing for your visit

Travelling to the Museum

The nearest tube station to the Jewish Museum is Camden Town on the Northern line. Camden is a popular place and the station is often busy so there will probably be lots of other people around.



On your walk to the museum, look out for the famous Jazz Café and also the red bus which is the home of an estate agents. Can you find the old pet shop? What does it sell now?



Arriving at the Museum

The Jewish Museum can be found on Albert Street. From the outside, it looks just like one of the other houses on the street.



We are here!

The museum opens at 10am. You might have to wait in a short queue outside. Before you go in, one of our Security staff will check your bag. After they have done this, they will open the door for you to let you inside. The door opens outwards. If it is raining, your bag will be checked inside.



This is George. He is one of our friendly Security team.



Inside the Building

Once inside the museum, there is a cloakroom where you can leave your bags and coats. Nearby there is an accessible toilet and baby care room.



If you need to leave the museum at any time, you can press the button by the door and this will open automatically.



There will be staff and volunteers to welcome you to the museum. One of our volunteers will give you a sticker which you can wear if you like, but you don't have to.

Ground Floor: Welcome Gallery

Just inside the museum is the Welcome Gallery. This space has changing exhibitions, so it might look different from the photo on the right. Check our What's On page to see the current exhibition.

You can enjoy some arts and crafts in this space.



Here you will also find our shop. If you have some money to spend, you may want to visit here before you go home.

Upper Ground Floor

If you are hungry or thirsty, our cafe has some light refreshments. You can do some colouring and drawing in the Activity Zone.



On this floor you will also find accessible toilets and access to the stairs and lift.



First Floor: Judaism Gallery

Go up the stairs or use the lift to get to the Judaism Gallery. The room is laid out like a synagogue (the Jewish place of worship) and right in the centre you can see the Torah (the Jewish holy book).

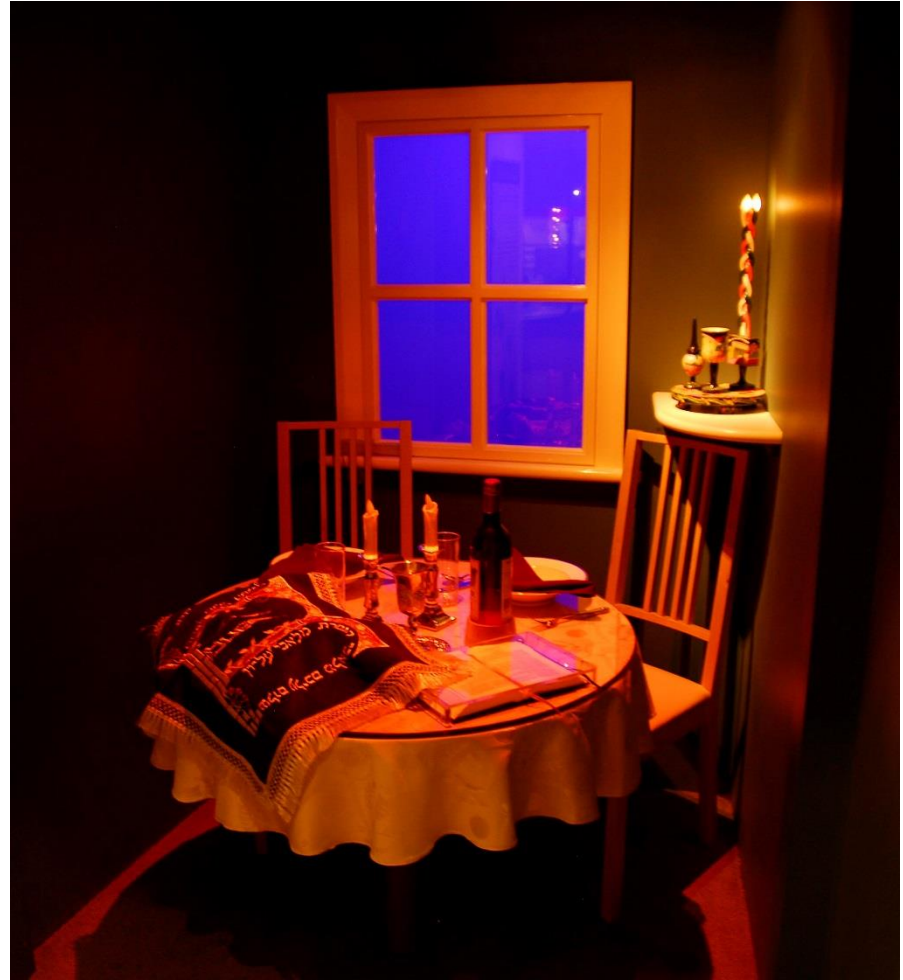
It is darker in this room than in other places in the museum because the objects on display are very precious and extreme light can damage them.



In this room you can try on a prayer shawl and kippah if you would like.



You can also sit at the table and be immersed in our Shabbat experience. You can listen to some Shabbat songs and blessings.



Second Floor: History Gallery

If you go up to the second floor you can see the History Gallery, where you can learn more about British Jewish history from 1066 to today.

Make sure you see our Yiddish theatre. You can try the costumes on if you would like.



We have temporary exhibitions on our third floor. The exhibitions in this space change every few months, so it might look different from the photo below. You can visit our [What's On](#) page to find out more about the current exhibition.



From the third floor there is a big drop so please be careful on the stairs. Do not lean over or climb on the bannisters.



**The Jewish Museum London look forward to meeting you.
We hope this guide will help you prepare for the visit.**